



BIRMINGHAM CITY
University

International Guide



Contents

- 3 Welcome from the Vice-Chancellor
- 4 Welcome to the UK and Birmingham City University
- 6 Birmingham – a gateway to the UK
- 8 The University in numbers
- 10 Why choose Birmingham City University?
- 12 Learning environment/campuses
- 14 What can I study at Birmingham City University?
- 16 Birmingham City University International College
- 18 Inspirational teaching
- 20 Our students and graduates
- 24 Student Support – International Office
- 25 Student Support – Ask: student enquiry service
- 26 Student Support – Student Services and Students’ Union
- 28 Accommodation
- 30 Fees and scholarships
- 32 English language requirements
- 34 Entry requirements
- 36 How to apply
- 38 International course list
- 44 How to find us



Welcome from the Vice-Chancellor

Thank you for your interest in studying at Birmingham City University. I hope that this International Guide will assist you and answer all the questions you have, as well as show you the wonderful things our University has to offer.

Birmingham City University has 22,500 students from over 80 different countries, studying programmes from a wide range of disciplines. We ensure every one of those students feels at home while studying here, and if you choose to attend here you will join an enthusiastic and committed student population.

Our aim to be placed in the top 10 per cent of research-engaged universities has been enhanced, following the recent Research Excellence Framework (REF) 2014. The report revealed we have doubled the number of staff producing internationally recognised research, with 11 subjects assessed as ‘internationally excellent’.

The University is currently mid-way through a £260 million investment plan, including a major expansion of our City Centre Campus. Our latest state-of-the-art facility, The Curzon Building, is home to our Business, English, Law and Social Science courses as well as being a hub for our students.

By studying here, you will discover Birmingham is a thriving, multicultural city to both live and learn in. Its location in the heart of England means there is easy access to many attractions further afield, as well as offering excellent shopping, dining and entertainment opportunities.

I am sure this International Guide will be a valuable resource and I hope to welcome you to Birmingham City University in the future.

Professor Cliff Allan
Vice-Chancellor

1

Welcome to the UK



“Birmingham is the second largest city in the UK, so I love living and studying here; it’s a very lively city and I’ve made lots of international friends - you will never get bored and moving here won’t be a culture shock as there are lots of Vietnamese and Chinese students.”

“ Tuyen Kim Ngan Khau
Vietnam, BA (Hons)
International Finance

Welcome to the UK and Birmingham City University. The UK is a fantastic country to study in. You’ll find a country rich with heritage, tradition, exciting cities and green countryside, home to cutting-edge fashion, castles and historic houses, the Royal Family, The Beatles, Wimbledon and David Beckham.

British degrees are highly valued by employers across the world and enhancing your English language skills will benefit you in all areas of business, whatever your chosen career.

You will receive a warm welcome at Birmingham City University – we’re in the heart of England with excellent transport links across the UK, into Europe and internationally. By studying here, you will join a multicultural, international university and enjoy state-of-

the-art facilities, resources and dedicated support. We’re in the UK’s second largest city, so there’s always plenty to do too!

There are many great places to see and landmarks to visit in the UK, from Buckingham Palace to the home of Shakespeare, Stratford-upon-Avon, so we hope that while you’re here you’ll get to see and experience the best of what our nation has to offer.

1 Selfridges, a famous shopping department store in the UK

2 Changing of the Guard, Buckingham Palace



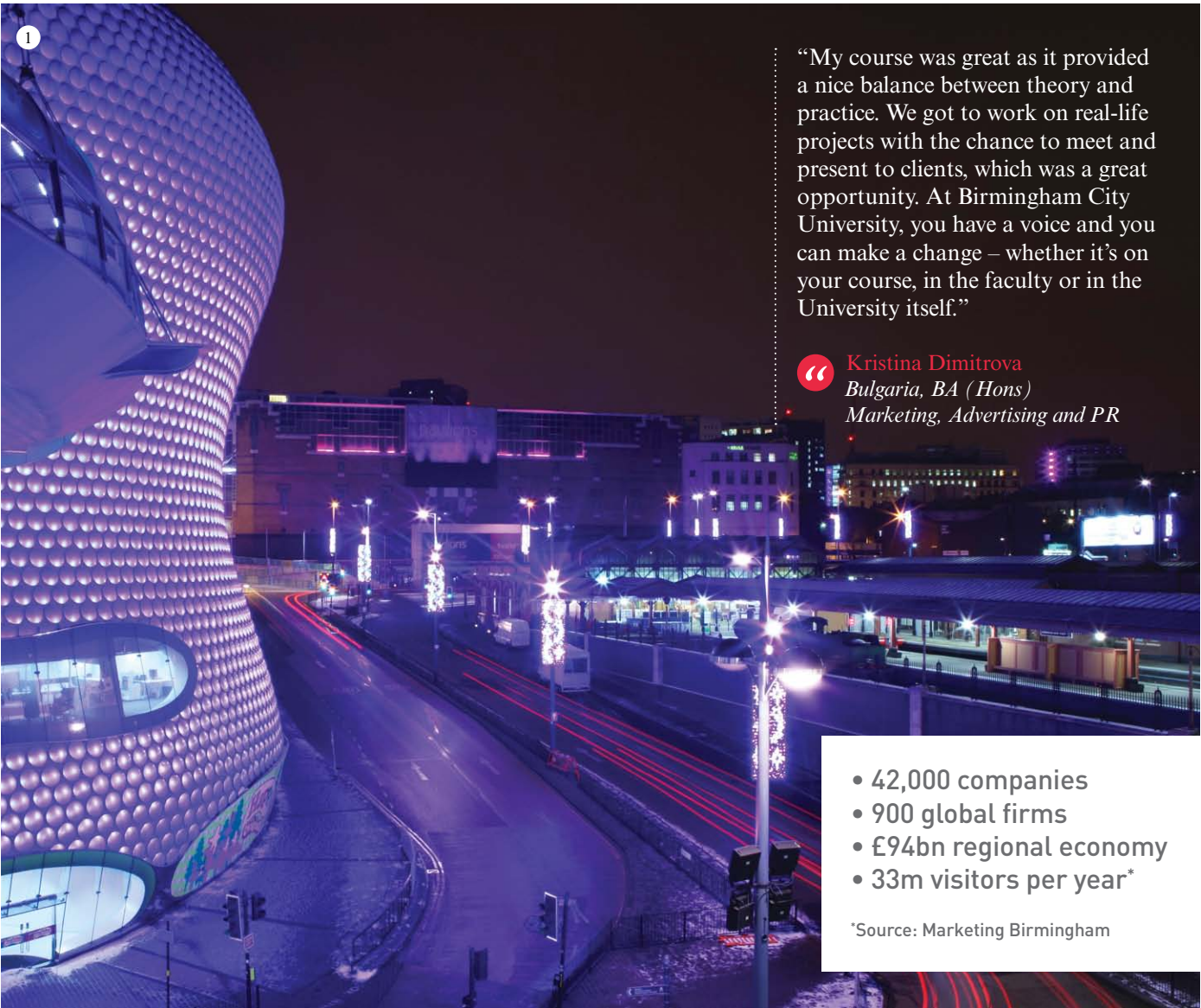
2

Birmingham, a gateway to the UK

Birmingham is the UK’s second largest city with a population of 65,000 students. It covers an area of 80 square miles and has plenty to offer international students.

- We’re a multicultural city, the second most diverse city in the UK after London. We have a wide mix of communities and religions.
- We’re 1 hour 20 minutes from London by train and it’s easy to get anywhere in the UK by road or rail, while our airport connects to over 120 cities worldwide.
- People travel from all over the UK for Birmingham’s nightlife. From busy Broad Street and Brindleyplace to cool bars and cafes, there’s something to suit everyone.
- Birmingham is Europe’s youngest city, with under-25s making up 40 per cent of the population.
- One of Europe’s largest shopping malls, the Bullring, offers many internationally-recognised brands in over 160 shops.
- World-famous bands and singers play at our indoor arenas, including Lady Gaga, Beyoncé, Drake, Katy Perry and Fleetwood Mac.
- Birmingham is the original home of the Balti – dishes from the world-famous Balti Triangle are delicious. Also don’t miss the Chinese hot pots in the city.
- There are two nearby Premiership football teams – Aston Villa and West Bromwich Albion – as well as the famous Edgbaston Cricket Ground and the Alexander Stadium for athletics.
- We have a world-class symphony orchestra, a Royal Ballet company and many theatres.
- £728 million is currently being invested in Birmingham’s transport infrastructure including an expanded tram network and a redeveloped city centre train station.
- We have plenty of green parks and spaces, including the beautiful Birmingham Botanical Gardens.

- 1 Selfridges & Moor Street station
- 2 Birmingham Museum and Art Gallery
- 3 Cannon Hill Park
- 4 Dragon boat racing at Brindleyplace



“My course was great as it provided a nice balance between theory and practice. We got to work on real-life projects with the chance to meet and present to clients, which was a great opportunity. At Birmingham City University, you have a voice and you can make a change – whether it’s on your course, in the faculty or in the University itself.”

Kristina Dimitrova
Bulgaria, BA (Hons)
Marketing, Advertising and PR

- 42,000 companies
- 900 global firms
- £94bn regional economy
- 33m visitors per year*

*Source: Marketing Birmingham



3

The University in numbers



1843

Founded in 1843

Birmingham City University has been educating professionals for over 170 years.



62 million

Resources

Our libraries provide access to around 62 million items.



£260 million

Investment

Our investment programme includes the new £62 million Parkside Building at our City Centre Campus with further developments currently under way.



2,860

Inspirational staff

This includes 1,500 teaching staff who come from and maintain their links with industry, ensuring you benefit directly from their knowledge, insight and contacts.



9/10

Graduates in employment/further study

Within six months of graduating, nine in 10 of our undergraduate and postgraduate students are in employment or further study (DLHE survey 2012/13).



6th

Out of 130 universities

We're in the top 10 for student teaching time (Daily Telegraph Course Finder 2013).



80

Students from 80 countries

Our diverse population of over 22,500 students includes some 2,400 international and EU students from over 80 different countries.



“Through my course, I got to meet professionals from companies like Pixar and Dreamworks, and got awesome tips on improving my animation. I love the computer room facility because the computers are equipped with latest software that I needed to complete my work.”

“ Brian Lobeda, Philippines
BA (Hons) Visual Communication
(Animation)



4

Why choose Birmingham City University?

With our staff and students coming from many different cultures and backgrounds, Birmingham City University has a diverse mix of nationalities. We have a reputation for being a modern and dynamic international university committed to transforming the futures of our international students.

“The fact the course is focused as much as it is on automotive engineering, while still covering the important parts of a mechanical engineering degree, gives the course a lot of credibility. It is taught by people with many years of industry experience and includes teaching in several software packages relevant to industry. The University has contacts with many companies such as Jaguar Land Rover and Bentley.”

“ Peter Adamsen
Denmark, BEng (Hons)
Automotive Engineering

We have been educating professionals since 1843.

- Our courses are practice-based; firmly rooted within industry to boost your employment prospects.
- We work with leading global names such as Microsoft, Cartier, the BBC, Sony and Rolls-Royce to inform our course content and set live projects for you to work on.
- Our on-campus student employment agency OpporTUNity gives you the chance to earn while you learn. There are many part-time jobs available on campus, with 160 EU and international students currently working through the scheme.
- Many of our courses have internationally-recognised accreditations, such as the ACCA (Association of Chartered Certified Accountants), CIMA (Chartered Institute of Management Accountants) and RIBA (Royal Institute of British Architects).
- We're mid-way through a £260 million investment plan, including a major expansion of our City Centre Campus.
- Our state-of-the-art facilities are what you'd find in the workplace. Our Law students debate in simulated court rooms, Business students can access an authentic boardroom, media facilities include radio, TV and 'green screen' studios and Engineering students can make use of an environmental lab, emissions test facilities and over £11 million worth of computer equipment.
- Many of our academics are globally recognised within their fields, including the UK's leading criminologist, Professor David Wilson.

Industry partnerships include:

- Cartier
- Cisco
- Jaguar Land Rover
- Live Nation
- Microsoft
- Rolls-Royce
- Royal Shakespeare Company
- SAP
- Sony.

5

Our campuses and learning environments

When you start your studies here at Birmingham City University, the first thing you'll notice is the high standard of our campuses. With an investment of £260 million across our buildings and facilities, we are committed to giving you the very best learning environment to help shape your experience.

City Centre Campus

The Parkside Building

The building has been designed to maximise natural light and encourage collaboration between students on different courses. It's the perfect setting for the workshops and teaching spaces of our design courses, as well as the state-of-the-art media centre for Birmingham School of Media.

Facilities include:

- Print, textiles, wood, ceramics and glass workshops
- Photography studios and darkrooms
- Digital print and pattern-making facilities
- Four industry-standard TV studios
- Green screen MILO studio
- Radio studios and editing suites.

The Curzon Building

The latest addition to our City Centre Campus development, The Curzon Building forms a new focal point for the University, hosting a superb library and dedicated

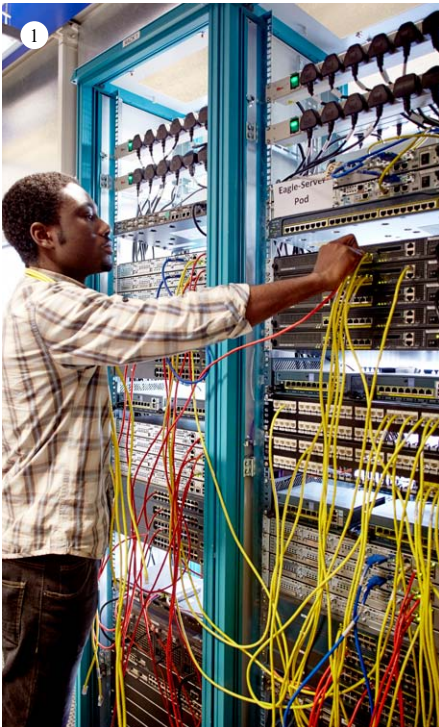
provision for student queries and support. The 24,300 sq m building also offers a new home to our Business, Law, Social Science and English courses.

Facilities include:

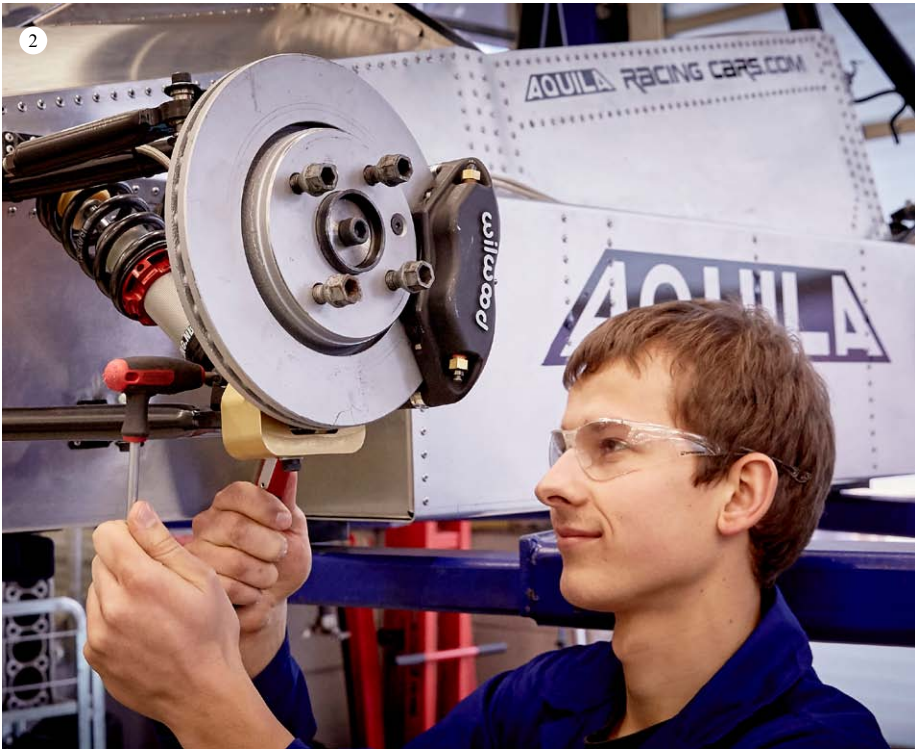
- Library with access to 62 million print and online resources
- Seminar rooms and lecture theatres
- Dedicated IT and student services support
- Two wings of teaching accommodation
- Simulated court rooms
- Students' Union
- Catering and social spaces.

Millennium Point

This landmark building, situated in one of the largest regeneration zones in the UK, is home to the £4 million purpose-built Birmingham School of Acting and the workshops, laboratories and teaching spaces used by students on courses from our Faculty of Computing, Engineering and the Built Environment.



- 1 Millennium Point network racks
- 2 Millennium Point engineering lab
- 3 The Parkside Building photography studios
- 4 School of Jewellery



Facilities include:

- 10 specialist studios complete with acoustic panelling and sprung floors
- Large performance studio (a benchmark for drama training facilities in the UK)
- Noise and vibration cells
- Robotic laboratory
- 3D printing
- Engine emissions test facilities, environmental laboratory and thermodynamics equipment
- Recording facilities and vintage mixing desk.

City South Campus

Following a £30 million refurbishment and the completion of a new teaching facility, all Health and Social Care students are now based on one campus in Edgbaston. Our realistic learning environment includes an operating theatre, hospital wards and a fully equipped midwifery skills/birthing room.

Facilities include:

- Virtual radiotherapy suite
- A radiography-imaging suite
- A simulated home environment
- Specialist resource room.

City North Campus

This campus is home to our School of Education, where students get the feel of a real school environment. Also here are a number of the University's halls of residence and our Doug Ellis Sports Centre, which is open to students on all courses and the wider local community.



Facilities include:

- Replica classrooms
- Replica school gym with changing rooms
- Student accommodation
- Sports centre.

Birmingham School of Art – Margaret Street

Floating mezzanine levels, glass lifts and cutting-edge workspaces sit comfortably beside the original stained glass windows and mosaic floors of this glorious purpose-built art school. This Grade I listed Venetian Gothic building houses a wonderful complex of traditional-style workshops, teaching and exhibition space.

Facilities include:

- Light and airy studios
- Gallery and installation space
- Fine art library
- Woodwork, metal, plaster, fibreglass and ceramics workshops
- Digital media, print and photography workshops.

School of Jewellery – Vittoria Street

One of the most significant jewellery schools in the world stands in a modern and spacious building right at the heart of Birmingham's famous Jewellery Quarter, where much of the jewellery made in Britain today is manufactured.

Facilities include:

- Soldering hearths and polishing machines
- Bench-mounted powered equipment

- Lathes and milling machines
- Floor-to-ceiling windows, providing excellent natural light levels
- Exhibition space and specialist library.

Birmingham Conservatoire

Currently, this purpose-built music school has some of the finest performing, teaching and music technology facilities in the country. And, with a new £40 million building planned at our City Centre Campus for 2017, our students will soon benefit from a new 475-seat concert hall, five public performance spaces, private rehearsal and practice rooms, and teaching spaces for musicians from a variety of disciplines.

Current facilities include:

- Six state-of-the-art recording and editing studios
- Over 50 dedicated practice rooms
- Specialised library
- 150-seat recital hall with multi-channel sound system.

BCUIC – Bournville

Our Bournville site, located in the idyllic setting of the Bournville Village Trust conservation area, has a 100-year pedigree as a centre of learning. It is home to Birmingham City University International College (see page 16), which provides bespoke pathways for overseas students, leading to undergraduate and postgraduate courses at the University.

6

What can I study at Birmingham City University?



“What I enjoyed most about the University was the people; there was such a good community. I met great tutors and amazing friends at the University; they helped me out and supported me.”

Shijie Hai
China, BA (Hons)
Visual Communication

Studying at Birmingham City University can change the course of your life. Our practice-based learning means you'll have hands-on, real-world experience.

Our subject areas include:

- Accountancy and Finance
- Acting and Theatre
- Advertising, Marketing and PR
- Architecture/Landscape Architecture
- Art, Design and Visual Communication
- Built Environment
- Computing and Technology
- Criminal Justice
- Education and Teacher Training
- Engineering

- English
- Fashion, Textiles, Interior and 3D Design
- Health and Social Care
- IT
- Jewellery and Silversmithing
- Law
- Media and Multimedia Technology
- Music
- Social Sciences.

For more information on all of our courses, please visit www.bcu.ac.uk/international.

7

Birmingham City University International College

Birmingham City University
International College



If you can't meet the academic or English language requirements to go straight onto one of our courses, or if you have been away from education for some time and want to improve your skills, you may be able to begin your studies at Birmingham City University International College (BCUIC). BCUIC provides a pathway to degree studies - undergraduate or postgraduate - at Birmingham City University.

BCUIC is part of the global Navitas Group, an internationally recognised education provider with more than 35 different colleges and campuses worldwide.

BCUIC gives you access to Birmingham City University's facilities and services, while helping you work towards achieving a Bachelor's or Master's degree with us.

The BCUIC offer

BCUIC offers you plenty of opportunities to enjoy your studies and the many social and

cultural activities available in Birmingham and the surrounding area.

You will work with other students, teachers and BCUIC support staff to develop a wide network of contacts who will all contribute to your learning experience and future success.

BCUIC gives you:

- A flexible entry system with three intakes every year in January, May or September, so you can start studying at a time that best suits you.
- Smaller classes with personalised attention. Classes usually have no more than 35 students and English language classes are restricted to a maximum of 16.
- A dedicated support team, offering advice and help 24 hours a day, seven days a week. The team can organise an airport pick-up, accommodation allocation and referral services. You'll also receive a full orientation for the college, University and the city of Birmingham.

For more information, visit
www.bcuic.navitas.com.



8

Inspirational teaching

Many of our 1,500-strong team of academic staff, professors and researchers are practising professionals and leading experts in their sector. This means you'll receive first-hand and up-to-date knowledge from those in the know.

Professor
Lubo Jankovic



Our leading experts



Birmingham City Business School's Dr Javed Hussain is an expert in entrepreneurial and ethnic minority finance.

The School of Computing and Digital Technology's Professor Cham Athwal is a leading researcher in vehicle crash testing who has achieved huge safety improvements for the automotive sector.

Kathryn Moore, Professor of Landscape Architecture, has been elected as the new World President of the International Federation for Landscape Architects.

Professor David Edwards, from the School of Engineering and the Built Environment, recently became 'Chief for Educational Development' in support of several towns and villages in Ghana.

Dr Jon Yorke, Reader in Law, is Director of the University's Centre for American Legal Studies.

Sam Coley, Senior Lecturer in Radio at Birmingham School of Media, was shortlisted for an award at the 2014 New York Radio Festival.

Bob Calver, Senior Lecturer in Broadcast Journalism, has been made an Honorary Professor of the Culture and Media College at Shenyang University in China.

Barry Morris is course director for MSc Management, and has worked at senior level on advertising accounts for companies such as Sony, Sega, Turtlewax and PZ Cussons.

You'll be further inspired by our famous honorary degree recipients, including internationally-renowned Chinese pianist Lang Lang, fashion designers Gok Wan and Bruce Oldfield, actress Julie Walters, musician Jeff Lynne, Chinese-born entrepreneur W Wing Yip OBE and adventurer Sir Ranulph Fiennes.



World-renowned musician Professor Julian Lloyd Webber is the new Principal of Birmingham Conservatoire.

The University is home to one of the UK's leading criminologists, Professor David Wilson – a regular media commentator on issues of crime and punishment.



Senior Lecturer in Law Sarah Cooper is our Director of Mooting, and has helped Law students to obtain scholarships and compete in national mooting finals.

Professor Lubo Jankovic is an expert in energy-efficient buildings, and led the research on the ground-breaking Zero Carbon House that won a Royal Institute of British Architects award and attracted worldwide media attention.

Professor of Interdisciplinary Environmental Research Mark Reed's 'Sustainable Uplands' project has been voted 'best example of impact' by the Rural Economy and Land Use Programme.

9

Our students and graduates

Birmingham City University is committed to ensuring our graduates stand out from the crowd in today's competitive job market. Our graduates hold senior positions in global companies and create award-winning entertainment, work in music and fashion, teach in universities, create iconic car designs and more.

“As an international student with little knowledge of the English language, moving to the UK from China was a daunting step, but the support and encouragement I received from the University helped me to achieve my ambitions. The School provided cultural and historical education and I enjoyed every second.”

“ **Fei Liu**
BA (Hons) Jewellery and Silversmithing

Founder of Fei Liu Jewellery – shortlisted three times for UK Jewellery Designer of the Year



“My advice? Be passionate, hard-working and enjoy what you do. Listen to your lecturers... mine told me to start a blog!”

“ **Lily Pebbles**
BA (Hons) Marketing, Advertising and PR

Blogger and Vlogger

“I truly believe this is the best place to study for Cisco networking. I use the technologies learned in MSc Data Networks and Security in my day-to-day job. I think it has definitely helped in understanding network issues and how to resolve them.”

“ **Amrik Singh**
BSc (Hons) Software Design and Networks

Network Consulting Engineer, Cisco



“The course was very interesting and engaging, not to mention enjoyable, and certainly made my time with the University a pleasant one. There was plenty of relevant information and the tutors were really in touch with what we needed to learn. Practical and theory-based work was split 50-50, which suited me well.”

“ **Marsha Ramroop**
BA (Hons) Media and Communication

Assistant Managing Editor, BBC Radio Northampton

“My time here at Birmingham City University has been life-changing. Having moved nearly 2,000 miles, I’ve met people from all over the world, studied with some great lecturers and had the opportunity to do what I love through work-based placements.”

“ **Susan Lai**
BA (Hons) Business and Management



“As a group, we were very tight-knit; lecturers knew who we were, and accessing them for additional support was very easy. The range of content was wide enough to cover most of what you can pursue outside of education in industry – I found what interested me through one of the modules at the University and now do this as a job.”

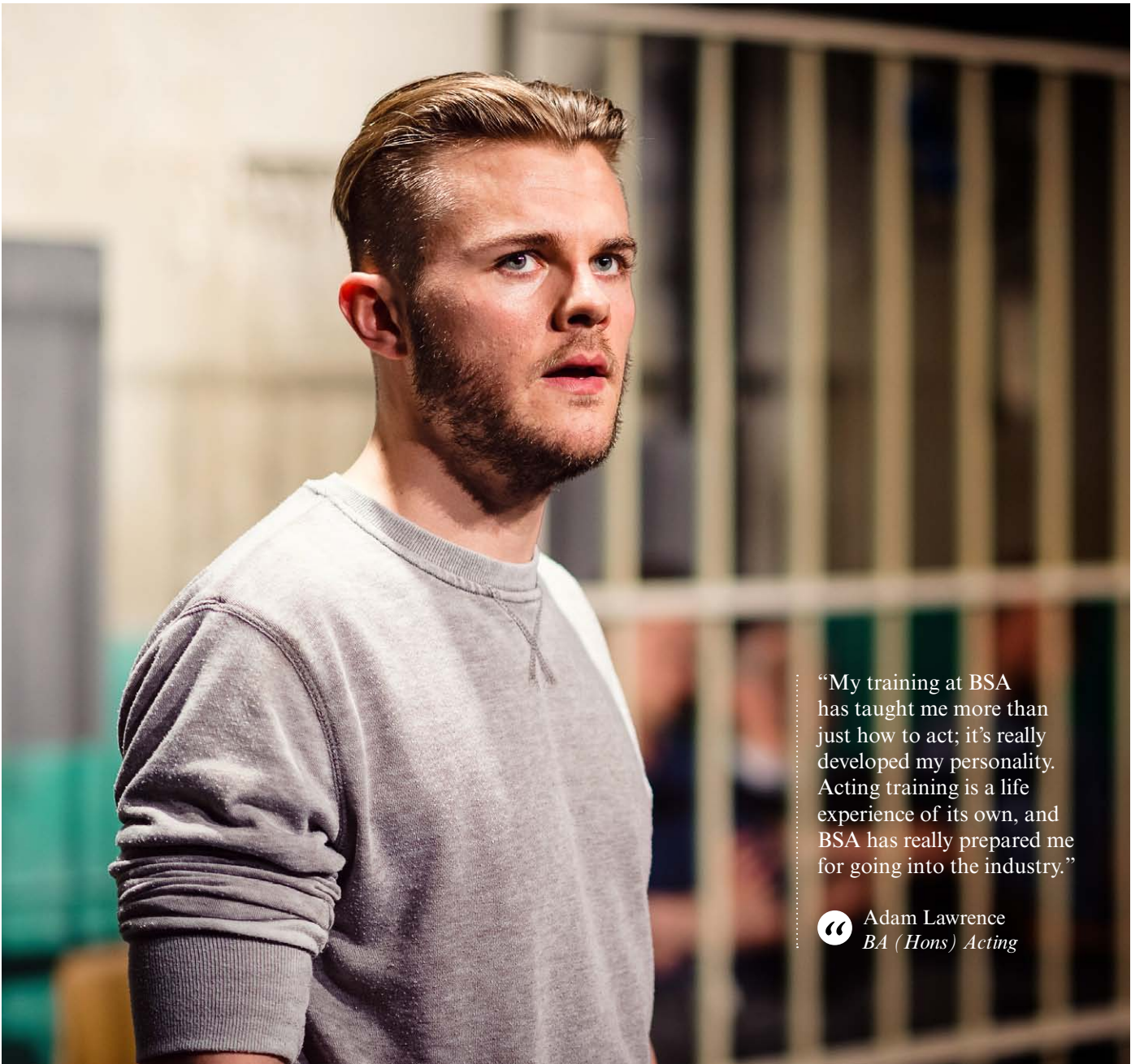
“ **Michael Carter**
BEng (Hons) Automotive Engineering

*Product Development Graduate,
Aston Martin*



“Birmingham is the most rewarding environment in terms of being cosmopolitan; there’s so much contrast and there are so many complexities in Birmingham, so, for journalists, it’s a huge metropolis bursting with potential. You really felt like you were a journalist learning to make your first steps.”

“ **Anna Holligan**
*MA/PgDip Broadcast Journalism,
BBC Foreign Correspondent*



“My training at BSA has taught me more than just how to act; it’s really developed my personality. Acting training is a life experience of its own, and BSA has really prepared me for going into the industry.”

“ **Adam Lawrence**
BA (Hons) Acting

10

Supporting your study

Your International Office

The International Office co-ordinates and supports the recruitment and admissions process, providing advice and guidance to prospective international students, assisting with initial enquiries, applications for places on programmes and arrival to study at the University.

Our friendly team is here to help you and we have Regional Managers who regularly visit countries across the world.

We have offices in China, India and Malaysia; if you are from these countries, you can make an application direct to them.

Visit www.bcu.ac.uk/international for our latest information and in-country visits.

**Birmingham City University
International Office - UK**

T: +44 (0) 121 331 5389
E: international.enquiries@bcu.ac.uk

**Birmingham City University
China Office**

Shanghai:
T: + 86 (0) 21 62888511/12/13 - 804
T: + 86 (0) 21 62888511/12/13 - 806
T: + 86 (0) 21 62888511/12/13 - 802

Beijing:
T: + 86 (0) 10-57454005

E: application@bcuchina.cn
chinaoffice@bcu.ac.uk
W: www.bcuchina.cn

**Birmingham City University
India Office**

T: +91 (0) 11 2373 6790/91/92/93
E: indiaoffice@bcu.ac.uk

**Birmingham City University
Malaysia Liaison Office**

T: +60 (0) 3 2780 7288
E: malaysiaoffice@bcu.ac.uk

We also have dedicated email addresses for specific regions. Please contact:

africa@bcu.ac.uk
mena@bcu.ac.uk
southeastasia@bcu.ac.uk
southasia@bcu.ac.uk
europe@bcu.ac.uk



Ask

The University's new student enquiry service

Our new, integrated student enquiry service, Ask, brings together our student support within a single enquiry service covering a wide range of topics.

The ASK service will initially provide a front line enquiry service for:

- Student Services
- Students' Union
- Academic Services
- Finance.

The service ethos is 'ask us anything' and Ask will deal with questions on a wide range of topics, referring students appropriately within the University if needed.

There will be face to face helpdesks in The Curzon Building (City Centre Campus) and Baker building (City North Campus). Current arrangements for face to face student support will continue at City South Campus for the time being.

An online helpdesk, called iAsk, will enable students to submit their questions online and will offer supporting information in the form of Frequently Asked Questions.

Students can access Ask by calling +44 (0)121 331 7777, logging an enquiry with iAsk (www.bcu.ac.uk/askus) or coming to one of the helpdesks in person.

“I work in the International Office as a Conversion Officer through the University’s OpportUNITY programme, and I’ve done this for two years alongside my Law study. My advice to students is to take advantage of the opportunities within the University.”

“ Ogu-Jude Munachiso
Nigeria, LLB (Hons) Law

Student Services gives you access to a range of specialist staff, offering expert help and advice, including work, finance, visas and immigration, and health and wellbeing.

Student Services

Jobs and careers

While studying here, we can help you get a National Insurance number, look for a part-time job and improve your CV. Our student employment agency, OpportUNITY, allows you to apply for part-time jobs at the University, which you can fit around your studies, gaining valuable skills and experience.

The University’s Enterprise, Innovation and Business Engagement department will assist international students who will want to apply for a Tier 1 Graduate Entrepreneurship Scheme visa towards the end of their studies.

Visas and immigration

Our highly qualified International Student Advisers can provide advice and guidance on a range of issues, including immigration and employment, as well as academic, personal and other welfare issues.

For the latest information, visit www.gov.uk/government/organisations/uk-visas-and-immigration.

Meet and Greet

We provide a free Meet and Greet service at Birmingham Airport to welcome you to the UK and take you to your University accommodation.

For more details please visit the website at www.bcu.ac.uk/meet-and-greet.

Orientation Week

Orientation Week is dedicated to international students and our entire focus is on you. During Orientation Week you will:

- Enrol onto your course

- Get information about the University
- Meet members of staff
- Open your bank account, register with the police and register with a doctor
- Attend social events and familiarise yourself with Birmingham
- Make new friends and have fun.

For further information, please visit the website at www.bcu.ac.uk/studentservices.

Student mentoring

Student mentoring lets you speak to someone who has already been through the university experience, so you can learn from them.

- Online peer mentoring provides the opportunity to gain support from experienced students in settling into life at university.
- Online employer mentoring gives students direct access to alumni professionals and globally based employers.

For further information, please visit the website at www.bcu.ac.uk/student-info/student-services/student-mentoring.

Erasmus

If you are interested in undertaking part of your studies abroad then Erasmus may be of interest to you. It enables higher education students in 31 European countries to study for part of their degree in another EU country. The experience offers a unique opportunity to strengthen your foreign language skills, enhance your CV, experience new cultures and make new contacts and friends.

For further information, visit: www.bcu.ac.uk/erasmus.

Students’ Union

When you become a Birmingham City University student you automatically become a member of our Students’ Union, and have access to the wide range of fantastic services and facilities.

As an international student, you may arrive with a lot of questions and concerns. Our Advice Centre is staffed by professional advisers to provide information and advice on fees and funding, basic immigration queries, University procedures and looking for work in the UK.

We also have a wide range of sporting and social groups and societies to join, helping you to meet people with similar tastes and interests. If you can’t find a society that suits your interests, you can create your own. We also provide you with the opportunity to volunteer in many local and national projects that will look great on your CV.

The International Student Group is a society which will help you get acquainted with student and city life. From something as simple as having a meal at one of the city’s many restaurants, to a day trip to a different location, we’re here to create a welcoming social environment for our students.

We have a Hellenic and Cypriot Society, Indian Society, Nigerian Society, Oriental Society and Romanian Society, as well as Street Dance, Yoga, Rock, Online Gaming and Debating societies.

See www.bcsu.com for more information.



11

Home from home

As an international student you are guaranteed University accommodation for the duration of your course and our Accommodation Services team can help find the right place for you. All of our accommodation is secure, includes all bills (including wi-fi), and is a great way to make new friends as you settle into the city.

You can apply for University accommodation as soon as you’ve received the offer of a place from us. Your offer letter will include your Birmingham City University Application Number (Student ID), which you will need when completing the online accommodation application form.

University student accommodation – costs per week:*

- The Coppice – City North, Perry Barr - £96.50
- Oakmount – City South, Edgbaston - £99
- Oscott Gardens – City North, Perry Barr - £112.50 – standard; £123.50 – large; £128.50 – extra large
- Westmount – City South, Edgbaston - £98
- Private sector providers: City Centre location - £107 - £126

Please visit www.bcu.ac.uk/international/after-acceptance/apply-for-accommodation for more information.

Private accommodation

We encourage all new international students go into University halls of residence because it gives you the opportunity to meet other students and get to know the local area. If you decide that you want to stay in private accommodation we have our own letting agency, ‘Birmingham City Student Homes,’ which is the best way to find private accommodation. For further details, visit homes.bcsu.com.

*Figures for 2015/16 entry; at the time of publishing, 2016/17 accommodation fees had not been released.

“Birmingham City University provided me with great life experience. There were lots of networking opportunities, as well as facilities and events designed to bring students together. My course gave me a lot of opportunities to develop direction, and to practice. The main benefit was the close connection to the real, working, business world. You knew what to expect.”

“ Miriam Wolf
Germany, BA (Hons) Marketing,
Advertising and PR graduate
Executive Assistant,
Kiesewetter GmbH



- 1 Curzon Gateway
- 2 The Coppice
- 3 Curzon Gateway
- 4 Jennens Court

12

Fees and scholarships

It's important to consider the financial implications of studying in the UK, as you have to make sure you have enough money for tuition fees, study materials and living costs.

Your annual tuition fees cover everyday tuition, examination costs and membership of the Students' Union. Half of your fees are paid at enrolment, and the rest can be paid in instalments, provided you have a UK bank account.

You will also need to cover your living expenses (in excess of £9,135 for the first nine months of your studies or in excess of £1,015 per month*).

- If you pay your tuition fees in full before at or during your enrolment, you will be entitled to a £300 prompt payment discount.

Scholarships

The University also provides a range of scholarships, offering several methods of financial support:

- If you are already studying at Birmingham City University and joining a postgraduate course, you could be offered a loyalty scholarship of up to 20 per cent, subject to meeting certain criteria.
- If you are already studying in the UK and joining Birmingham City University for a postgraduate course, you could be eligible for a 10 per cent scholarship.

- Dependent on grades, we also offer scholarships of up to £2,000 for both undergraduate and postgraduate students on a first come, first served basis.
- If you're from a Commonwealth country or British dependent territory, you may be eligible for a Commonwealth Scholarship, while the British Chevening Scholarships are awarded to outstanding scholars with leadership potential.

For further details please visit the website at www.bcu.ac.uk/scholarships.

EU students

Students from EU countries pay the 'home' tuition fee for our courses and may be entitled to a tuition fee loan to cover fees. If you are a student from the EU, please visit www.gov.uk/student-finance for more information on what financial support may be available.

EU students are entitled to apply for two further scholarship schemes which are open to both home and EU students:

For the latest information on our scholarships, visit www.bcu.ac.uk/financial-support.

International fees for 2016/17 entry*	
Foundation (FCEAP)	£8,900
Undergraduate	£12,000
Postgraduate research/taught	£12,000
Exceptions	
MA Musicology	£12,000
MSc Accountancy and Finance (6 months)	£6,000
MSc Accountancy and Finance (CIMA Pathways) Dip Only	£8,500
ACCA full-time	£3,800 - £5,700
MBA (12/15 month)	£14,500
MA Luxury Goods Management	£14,500
Birmingham School of Acting Undergraduate/Postgraduate	£15,500
MSc Enterprise Systems Management	£15,500
Birmingham Conservatoire	
Undergraduate	£15,500
MMus (2 year)	£15,500
MMus (1 year)	£17,500

For home and EU fees, please see the relevant course page at www.bcu.ac.uk. *Correct at time of publication.

13

English language requirements

All teaching at Birmingham City University is carried out in English, so you must be able to demonstrate the required proficiency.

For many courses you should attain an IELTS 6.0 (with no band below 5.5). Some courses may require a higher IELTS score.

We conduct English language tests in the UK and overseas for applicants holding conditional offers subject to English language. Please check for regular updates on our English testing around the world at www.bcu.ac.uk/international.

The table shows the English language qualifications we currently accept for international students who do not have an approved Secure English Language Test (SELT).

Pre-sessional English courses
The pre-sessional English courses equip international students with all the necessary study and English language skills required to successfully pass their course of studies. The courses are for those who typical just fall short of their required programme's IELTS entry requirement and can arrive earlier and be upskilled by our language teachers. We offer pre-sessional English courses just before our September and January intakes.

English tests
The University's English language test assesses all your English skills — reading, writing, listening and speaking, and is designed to reflect how we will use English when studying, at work, and socially, in your new life in the UK. The University conducts English language tests within

the UK (Birmingham) and overseas including China, Hong Kong, Taiwan, Vietnam, Malaysia, Cyprus and Nigeria.

For further details, please go to: www.bcu.ac.uk/international/english-language.

Qualification	
IELTS (from non-approved test centres)	Mauritius Cambridge International General Certificate of Education Ordinary Level – syllabus 1125/1126
TOEFL (if taken overseas)	
Malaysia Cambridge General Certificate of Education Ordinary level (syllabus 1119)	Zimbabwe General Certificate of Education English Language Syllabus (1122) (ZIMSEC)
Edexcel Board GCSE Level	Further Education and Training Awards Council (FETAC) - Level 5 course in communications
OCR Board GCSE Level	
AQA Board GCSE Level	NCUK, English for Academic Purposes (EAP) Syllabus
WJEC GCSE in English	International Baccalaureate Diploma (offered in the Language ab initio and Language B courses)
Indian Standard XII (Tamil Nadu Board)	Unicentres English Language Test
Indian Standard XII (CISCE Board)	Edexcel IGCSE – syllabus 4EAO
Indian Standard XII (Central Board Secondary Education)	The Study Group English and Skills for University Study (ESUS) modules 3
West African Examination Council (WAEC) (Nigeria and Ghana)	
Sri Lankan O Level	Singapore Cambridge General Certificate of Education Ordinary level – syllabus 1127 and 1128
Brunei Cambridge General Certificate of Education Ordinary level – syllabus 1120	
HKDSE Hong Kong	



14

Entry requirements

Once you have found the course you would like to apply for, it's important that you have achieved, or are aiming to achieve, the entry requirements for that course.

We accept a variety of international qualifications.

For the latest entry requirements, you can take a look at our dedicated international web pages to find out more information - visit www.bcu.ac.uk/international - or contact us on +44 (0) 121 331 5389 or email international.enquiries@bcu.ac.uk.

For **undergraduate** courses, you should be educated to a standard comparable to British GCSE and/or A Level standard. Some qualifications may enable you to enter at a later stage, for example directly into the second or third year.

If you're applying for **postgraduate** courses, you should normally hold a qualification which is comparable to a British Bachelor's (Honours) degree.

If you're applying for a **PhD**, you should have a Master's degree in an appropriate

discipline. If you wish to study an **MPhil** degree, you should normally hold a First or Second Class Honours degree or equivalent.

If you have professionally accredited qualifications, you may be entitled to exemption of modules in your area of study.

Potential Birmingham School of Acting students who live outside the UK/EU must pass an audition which can be undertaken via DVD. For Birmingham Conservatoire, if you're already living or studying in the UK, you should request an audition in Birmingham. If you can't, you must send a high-quality DVD or CD. Most Art and Design courses will require a portfolio. You can send us a digital portfolio, to be submitted as low-resolution PDFs or as a link to an online platform.

Portfolio guidance

If the course you're applying for involves submitting a portfolio, it's important it represents the best of your work. Whether it is produced in physical or digital format, your portfolio should grab people's attention and keep viewers interested.

Your portfolio should include relevant work and show you have an informed knowledge of the subject. Show your creativity, experimentation and risk-taking. Give examples of paintings, drawings, photographs, three-dimensional work, time-based work and anything else relevant to the area of practice.

You should tell a story with your portfolio, and make annotations to show how you research and reflect on the development of your work.

If you are sending a digital portfolio, it should be no more than 20 slides, with each slide annotated. Sent via a PDF or PowerPoint document, the file should be no bigger than 20 MB. Audio compositions and/or moving image work are also acceptable formats, and if they can't be embedded within your PowerPoint then please send it as an MP3 or QuickTime file.

If your portfolio is being sent in a physical format, you should think of presenting it like a book. Your name and a title on the outside will be useful, and it should contain no more than 20 sheets. It can be any size, but make sure it's easy to carry. Hold mock interviews with friends or tutors so that you are comfortable showing and discussing your work.

For more guidance, please visit www.bcu.ac.uk/art/the-student-experience/portfolio-guidance.

15

How to apply

There are a range of ways to apply to us:

1. Online

You can apply directly to the University, completing and submitting an application form, along with attached scans of your original academic qualifications. Simply visit www.bcu.ac.uk/courses to find the course you're interested in and if it's open to international students, click on 'how to apply' and 'apply now' and then complete the online form and attach your documents.

2. Paper application form by email

You can also request a paper application form from international.enquiries@bcu.ac.uk and return by email, with attached scans of your original academic qualifications.

3. In-country representatives

Alternatively, our in-country representatives can help you make your application and apply for a visa, as well as offering important advice on studying advice.

For more information on the help available in your country, please visit www.bcu.ac.uk/international/why-study-here/your-country.

4. UCAS

If you're applying for an undergraduate degree, you can apply through UCAS. The University's UCAS code is **B25 BCITY**, which should be clearly marked on your application form.

Further advice

We advise you to apply well in advance to allow time to arrange your visa and accommodation. You can send copies of your qualifications if you do not upload these via email to international.enquiries@bcu.ac.uk.

Prospective MPhil and PhD students should submit a research proposal.

If you are going to be aged under 18 at the start of your course, we must have your parent or legal guardian's written consent. We will send a parental consent form to you along with your offer letter, which must be signed and dated by your parent or guardian. If your parent or guardian is not a resident in the UK, they must appoint a UK guardian, who the University can contact in an emergency.

Good luck with your application and we hope to welcome you on campus soon.

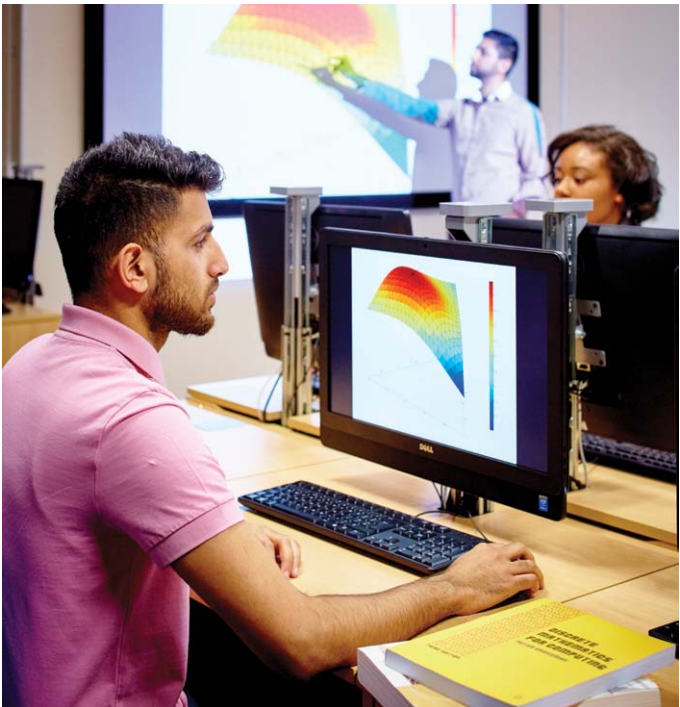
“Having colleagues from a number of countries and coming from different backgrounds increased the learning experience regarding group work between different cultures.”

“ João Fernandes de Alcantara Junior
Brazil, Master of Business Administration

16

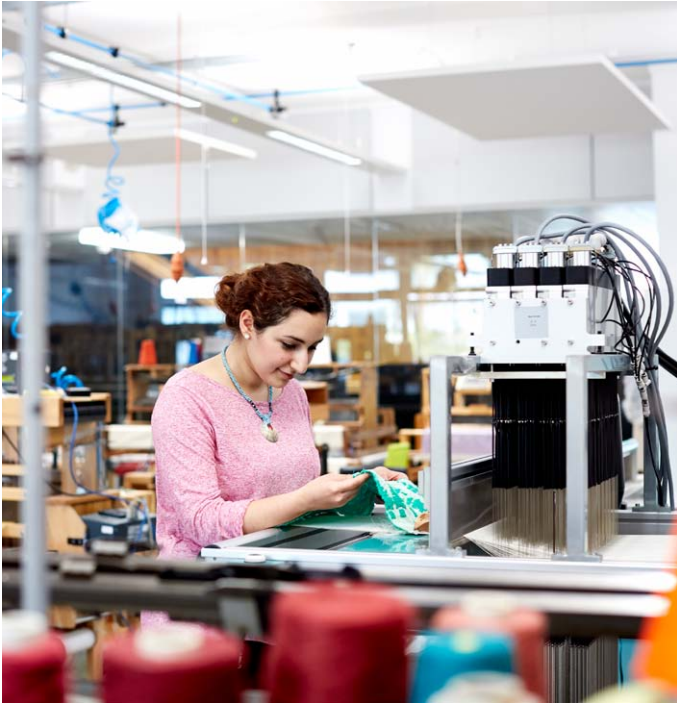
Courses open
to international
students[†]

Foundation	BA (Hons) Art and Design	BSc (Hons) Computer Science
HND Business and Management	BEng (Hons) Automotive Engineering	BA (Hons) Conductive Education
Foundation Acting	MEng Automotive Engineering	BSc (Hons) Construction Management
Foundation Certificate in English for Academic Purposes (FCEAP)	BSc (Hons) Building Surveying	BA (Hons) Creative Writing with English
HND Legal Studies	BA (Hons) Business	BA (Hons) Criminology
Preparation Programme for International Students in the Faculty of Health	BA (Hons) Business Administration (Top-up)	BA (Hons) Criminology and Security Studies
	BA (Hons) Business and Economics	BA (Hons) Criminology, Policing and Investigation
	BA (Hons) Business and Finance	BA (Hons) Design Management (top-up)
Undergraduate	BA (Hons) Business and Human Resource Management	BSc (Hons) Digital Media Technology
BA (Hons) 3D Designer Maker	BA (Hons) Business and Management	BA (Hons) Early Childhood Studies
BA (Hons) Accountancy	BA (Hons) Business and Marketing	BA (Hons) Early Childhood Studies (Top-up)
BA (Hons) Accountancy and Business	BSc (Hons) Business Information Technology	BA (Hons) Economics and Finance
BA (Hons) Accounting and Finance	BA (Hons) Children and Integrated Professional Care	BA (Hons) Education Studies*
BA (Hons) Acting	BEng (Hons)/MEng Civil Engineering	BEng/MEng Electronic Engineering
BA (Hons) Applied Performance (Community and Education)	BSc (Hons) Computer Games Technology	BA (Hons) English
BSc (Hons) Architectural Technology	BSc (Hons) Computer Networks	BA (Hons) English and Creative Writing
BA (Hons) Architecture (RIBA Part 1 Exemption)	BSc (Hons) Computer Networks and Security	BA (Hons) English and Drama



BA (Hons) English and Media	BA (Hons) Fine Art	BA (Hons) Jewellery and Silversmithing - Design for Industry
BA (Hons) English Language with English Literature	BSc (Hons) Forensic Computing	BA (Hons) Jewellery Design and Related Products
BA (Hons) English Literature	BA (Hons) Furniture and Lifestyle Products	BA (Hons) Landscape Architecture
BA (Hons) English Literature and English Language Studies	BSc (Hons) Gemmology and Jewellery Studies	LLB (Hons) Law
BA (Hons) English Literature with English Language Studies	BA (Hons) Horology	LLB (Hons) Law Graduate Entry (2 years)
BA (Hons) Fashion Design	BSc (Hons) Information and Communications Technology	LLB (Hons) Law with American Legal Studies
BA (Hons) Fashion Design with Design for Performance	BA (Hons) Interactive Entertainment (Digital Art)	LLB (Hons) Law with Business
BA (Hons) Fashion Design with Fashion Accessories	BSc (Hons) Interactive Entertainment (Digital Marketing)	LLB (Hons) Law with Business Law
BA (Hons) Fashion Design with Fashion Communication	BSc (Hons) Interactive Entertainment (Games Development)	LLB (Hons) Law with Criminology
BA (Hons) Fashion Design with Garment Technology	BA (Hons) Interior Design	LLB (Hons) Law with Marketing
BA (Hons) Fashion Business and Promotion	BA (Hons) International Business (Top-up)	LLB (Hons) Law with Psychology
BSc (Hons) Film Production Technology	BA (Hons) International Finance (Top-up)	LLB (Hons) Law with Sociology
BSc (Hons) Film Technology and Visual Effects	BA (Hons) International Marketing (Top-up)	BA (Hons) Marketing
BTEC HND Fine Art	BMus (Hons) Jazz	BA (Hons) Marketing, Advertising and Public Relations
	BTEC HND Jewellery and Silversmithing	BEng (Hons) Mechanical Engineering
		MEng Mechanical Engineering

BA (Hons) Media and Communication	BMus (Hons) Popular Music Performance	BA (Hons) Stage Management
BA (Hons) Media and Communication (Event and Exhibition Industries)	HND Popular Music Practice	BA (Hons) Textile Design
BA (Hons) Media and Communication (Journalism)	BA (Hons) Primary Education with QTS	BA (Hons) Textile Design (Constructed Textiles)
BA (Hons) Media and Communication (Media Photography)	BA (Hons) Product Design	BA (Hons) Textile Design (Embroidery)
BA (Hons) Media and Communication (Music Industries)	BSc (Hons) Professional Studies in Health and Social Care (Online Top-Up Degree)	BA (Hons) Textile Design (Printed Textiles and Surface Design)
BA (Hons) Media and Communication (New Media)	BSc (Hons) Psychology	BA (Hons) Textile Design (Retail Management)
BA (Hons) Media and Communication (Public Relations)	BSc (Hons) Psychology with Business	BA (Hons) Theatre Performance and Event Design
BA (Hons) Media and Communication (Radio)	BSc (Hons) Psychology with Criminology	BA (Hons) Visual Communication
BA (Hons) Media and Communication (Television)	BSc (Hons) Psychology with Marketing	BA (Hons) Visual Communication (Film and Animation)
BSc (Hons) Motorsports Technology	BSc (Hons) Psychology with Sociology	BA (Hons) Visual Communication (Graphic Communication)
BMus (Hons) (Music)	BSc (Hons) Public Health	BA (Hons) Visual Communication (Illustration)
BA (Hons) Music Business	BSc (Hons) Quantity Surveying	BA (Hons) Visual Communication (Photography)
BSc (Hons) Music Technology	BSc (Hons) Real Estate	
	BA (Hons) Sociology	
	BA (Hons) Sociology with Criminology	
	BSc (Hons) Sound Engineering and Production	



Postgraduate

MSc Accountancy and Finance (ACCA Pathway)
MSc Accountancy and Finance (CIMA Pathway)
MSc Accountancy and Finance (Generic Pathway)
MA Acting
MFA Acting (The British Tradition)
MArch Architecture (RIBA Part 2 Exemption)
MA Art and Design
MA Arts Practice and Education
MSc Automotive Engineering
PgDip Broadcast Journalism
MSc Building Information Modelling (BIM) and Management
MSc Business Computing
MSc Business Intelligence
MMus/PgDip Composition
MSc Computer Science
MSc Computing
MMus/PgDip Conducting (Choral or Instrumental)
MSc Construction Project Management
MA Contemporary Curating
MA Cosmetics Branding and Promotion
MA Creative Industries and Cultural Policy
MA Creative Writing
MA Criminology
MSc Cyber Security
MSc Data Analytics and Management*
MSc Data Networks and Security

MA Design Innovation Management*
MA Design and Visualisation
MA Design Management
MSc Digital Broadcast Technology
MA English Linguistics (Distance Learning)
MSc Enterprise Systems Integration with SAP Certification
MSc Enterprise Systems Management
MSc Environmental Sustainability
MSc Environmental Sustainability (Design and Construction)
MA Event and Exhibition Management
MA Fashion Accessory Design
MA Fashion Design
MA Fashion Management*
MA Fashion Media Management*
MA Fashion Promotion
MA Fashion Retail Management*
MA Fashion Styling
MA Film Distribution and Marketing
MA Fine Art
MSc Forensic Psychology
MA Freelance Photography
MA Freelancing and Journalism Enterprise
MA Future Media: Pro
MSc Future Media: Pro
MA Global Education Management*
MA Global Media Management*
MA Global Media Management (Advertising Industry)*
MA Global Media Management (The Music Business)*

MA Global Media Management (The News Business)*
Graduate Diploma in Law (GDL)
MSc Health and Social Care
MMus/PgDip Instrumental Performance
MA Interior Design
MA International Broadcast Journalism
LLM International Business Law
MA International Education
MSc International Human Resource Management (CIPD)
LLM International Human Rights
MA International Journalism
MSc International Logistics and Supply Chain Management (Distance Learning)
International MBA
MSc International Project Management (Distance Learning)
MMus/PgDip Jazz
MA Jazz Studies
GradCert Jewellery, Silversmithing and Related Products
MA Jewellery, Silversmithing and Related Products
GradDip Landscape Architecture
MA/PgDip Landscape Architecture
PgDip Legal Practice (LPC)
MSc Logistics and Supply Chain Management
MA Luxury Brand Management*
MA Luxury Jewellery Management*
MA Luxury Product Management*
MSc Management and Entrepreneurship*
MSc Management and Finance

MSc Management and International Business
MSc Management and Marketing
MSc Mechanical Engineering
MA Media and Creative Enterprise
MA Music Heritage
MA Music Industries
MA Music Radio
MMus/PgDip Music Technology
MMus Musicology
MSc Oil and Gas Management*
MA Online Journalism
MMus/PgDip Orchestral Performance (Strings)
MSc Pain Management
MA Planning Built and Natural Environments
LLM Planning Law (Built and Natural Environments)
PGCE Post-Compulsory Education and Training
PGCE Primary and PGCE Early Years
PGCE Primary with Specialism in Maths and QTS
MA Product Design
AdvPgDip Professional Performance
MA Professional Voice Practice
MSc Project Management
GradDip Psychology
MSc Public Health
MA Public Relations
MA Queer Studies in Arts and Culture

MA Radical Media Arts Philosophy
MA Radio and Audio Production
MSc Real Estate Management
MSc Risk Management
MA Screen Studies
MA Screen Studies with Production
PGCE Secondary Art and Design
PGCE Secondary Computer Science
PGCE Secondary Design and Technology (Food, Textiles and Product Design)
PGCE Secondary Drama
PGCE Secondary Mathematics
PGCE Secondary Music
PGCE Secondary Religious Education
PGCE Secondary Science with Biology
PGCE Secondary Science with Chemistry
PGCE Secondary Science with Physics
MA Social Media
MA Surface Design
MA Television Production
MA Textile Design
MA Textile Management*
MA Video Games Development (Gamer Camp: Pro)
MSc Video Game Enterprise and Production (Gamer Camp: Biz)
MA Visual Communication (various pathways available)
MMus/PgDip Vocal Performance
MA Zero Carbon Architecture and Retrofit Design

Research

EdD International (taught)
PhD Art and Design
MPhil/PhD (Built Environment)
MPhil/PhD (Business)
MPhil/PhD (Computing)
MPhil/PhD (Creative Writing)
MPhil/PhD (Digital Technology)
MPhil/PhD (Education)
MPhil/PhD (Engineering)
MPhil/PhD (English)
MPhil/PhD (Law)
MPhil/PhD (Media and Cultural Studies)
MPhil/PhD (Music)
MPhil/PhD (Social Sciences)

*Subject to validation
*Correct at time of publication



Where is Birmingham? How to find us.

Birmingham is located as the hub of the UK’s road and rail networks, and has an international airport with direct routes from countries including China, India and the USA.



Campuses

- 1 City North Campus
- 2 School of Jewellery
- 3 School of Art
- 4 Birmingham Conservatoire
- 5 International College (BCUIC)
- 6 City South Campus
- 7 City Centre Campus

Halls of Residence

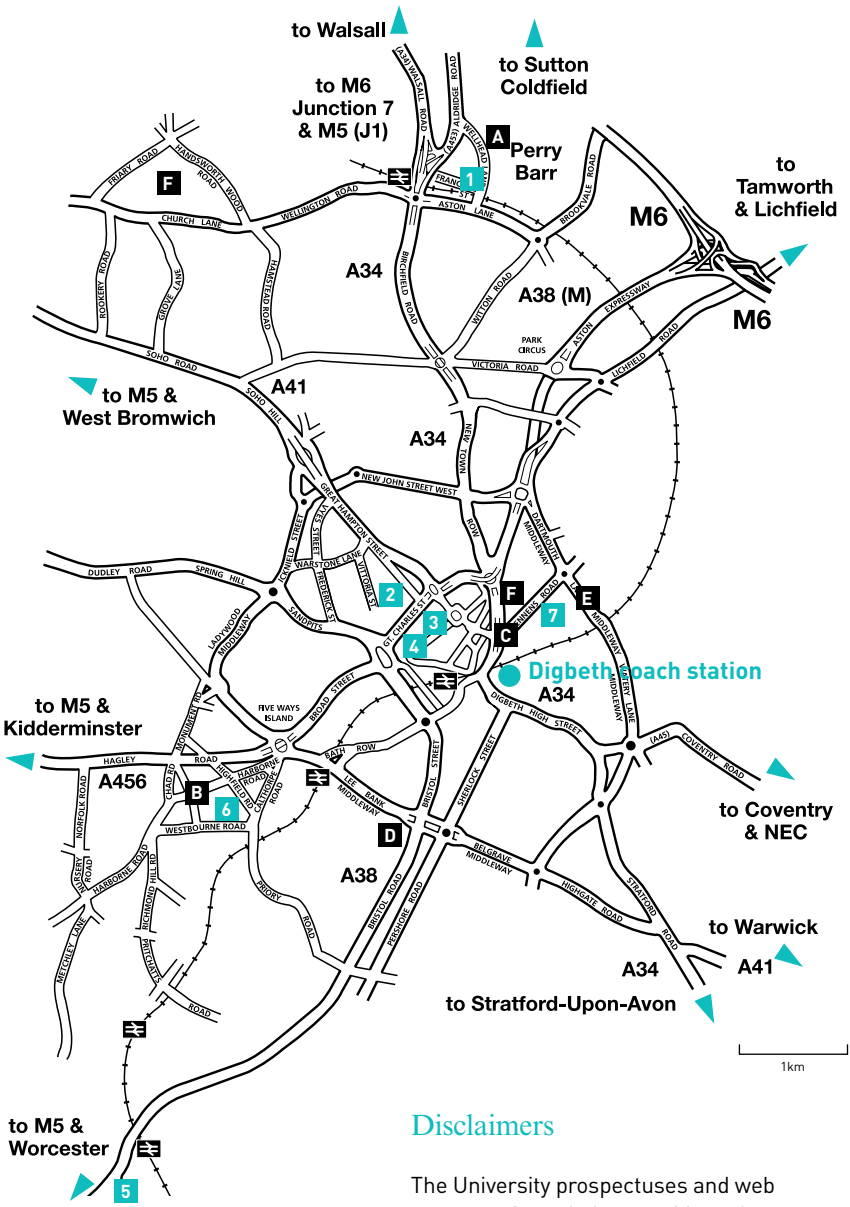
- A The Coppice and Oscott Gardens
- B Westbourne Campus
- C Opal 1
- D Jennens Court
- E Unite Curzon Gateway
- F Aston Student Village

Birmingham has three central train stations - New Street, Snow Hill, and Moor Street - while Birmingham International serves the airport.

Air links are also excellent and Birmingham Airport is constantly expanding to offer more flights to more destinations worldwide.

A network of bus and train services provide easy access to the city and University sites. This is supported by Midland Metro, a tramway/light rail system that has improved access to the city even further.

For more detailed information on getting to any of the Birmingham City University sites, please visit www.bcu.ac.uk.



Disclaimers

The University prospectuses and web pages are intended as a guide to the University’s courses and facilities and form no part of any contract between you and the University. For full terms and conditions and legal disclaimers go to www.bcu.ac.uk/policies-and-procedures.



Birmingham City University
International Office – UK

University House,
15 Bartholomew Row,
Birmingham,
B5 5JU
United Kingdom
T: +44 (0) 121 331 5389
E: international.enquiries@bcu.ac.uk
www.bcu.ac.uk/international

Birmingham City University
China Office
4th Floor,
Ke En International Center,
No. 66 Shanxi North Road,
Jing An District,
Shanghai,
200041

T: +86 (0) 21 62888511/12/13 - 804
T: + 86 (0) 21 62888511/12/13 - 806
T: + 86 (0) 21 62888511/12/13 - 802
Beijing: + 86 (0) 10-57454005

E: application@bcuchina.cn
chinaoffice@bcu.ac.uk
W: www.bcuchina.cn

Birmingham City University
India Office
810, Mercantile House,
8th Floor, 15 Kasturba Gandhi Marg,
New Delhi, 110001,
India

T: +91 (0) 11 2373 6790/91/92/93
E: indiaoffice@bcu.ac.uk

Birmingham City University
Malaysia Liaison Office
B-3A – 2, Megan Avenue 1,
189 Jalan Tun Razak,
50400 Kuala Lumpur
Malaysia

T: +60 (0) 3 2780 7288
E: malaysiaoffice@bcu.ac.uk

